

VELOCITY™

HIGH PERFORMANCE FIBER

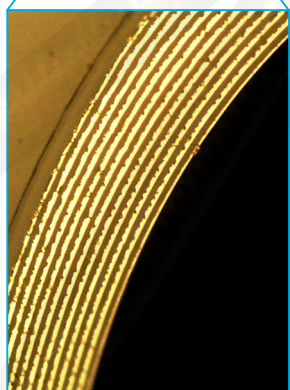
PRECISION | SPEED | PERFORMANCE

while preserving healthy tissue

● 12 MIRROR LAYERS TRANSMIT ENERGY IN A SAFE, RELIABLE MANNER

● PRECISION OF CO₂ WITH THE CUTTING SPEED OF MONOPOLAR¹

● UP TO 10X LESS THERMAL SPREAD THAN OTHER ADVANCED ENERGY OPTIONS²



Patented Polymer-based
Fiber Technology

UNPARALLELED PERFORMANCE WHILE PRESERVING HEALTHY TISSUE

Histological Assessment of Thermal Injury²

Monopolar



Monopolar cautery, from left to right, 35, 30 and 25 Malis. Insert shows specimen excised at 30 Malis.

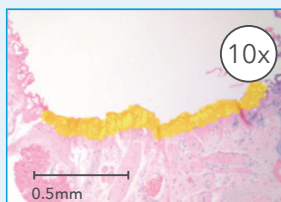


H&E specimen of monopolar electrosurgery tongue lesion produced at 40 Malis. Total collateral damaged area is highlighted. Image analyzed at 4x magnification.

OmniGuide CO₂ Fiber



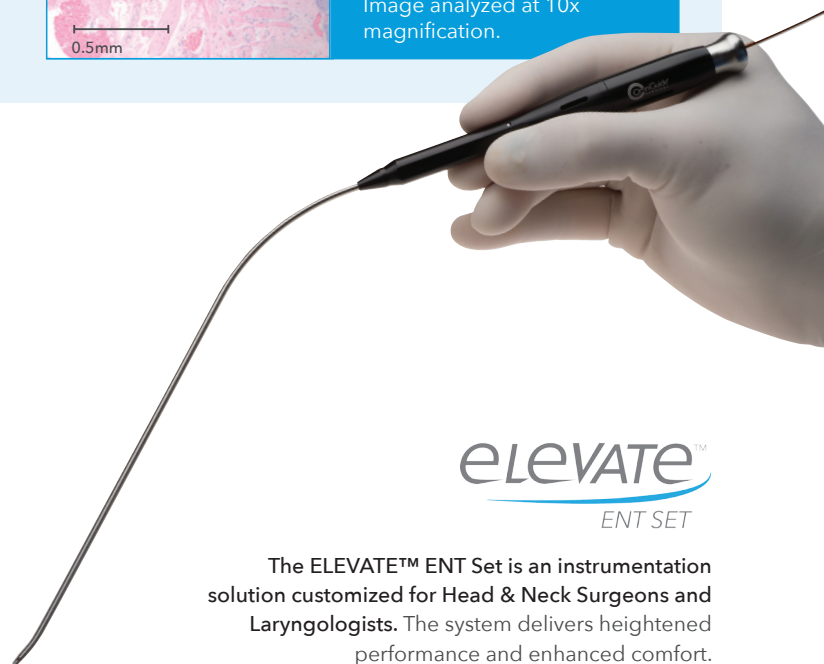
Two adjacent cuts using the CO₂ laser fiber at 15W, 70 PSI. Insert shows one of the specimens excised.



H&E specimen of CO₂ laser fiber tongue lesion produced at 20W, 70 PSI. Total collateral damaged area is highlighted. Image analyzed at 10x magnification.

FLEXGUIDE™ ULTRA

Specifically designed for use in conjunction with robotic surgery platforms. When coupled with the precise motion control and realistic depth perception of the robotic system, the OmniGuide Surgical advanced energy platform delivers on the promise of dependable and intuitive precision micro-surgery.



elevate™
ENT SET

The ELEVATE™ ENT Set is an instrumentation solution customized for Head & Neck Surgeons and Laryngologists. The system delivers heightened performance and enhanced comfort.

CATALOG NUMBER	PRODUCT NAME	DESCRIPTION
332005	VELOCITY High Performance Fiber	High Performance Fiber, 200cm / Single Use
321015	ELEVATE ENT Instrumentation Set	13 Piece Set with tray
FLEXGUIDE-ULTRA	FlexGuide Ultra	BeamPath Robotic Flexible Fiber Conduit, compatible with 8mm large needle driver or 5mm needle driver



1. Data on file at OmniGuide Surgical

2. Head & Neck White Paper Archive, Feb 2010, sponsored by OmniGuide, Inc.