

RevoLix^X

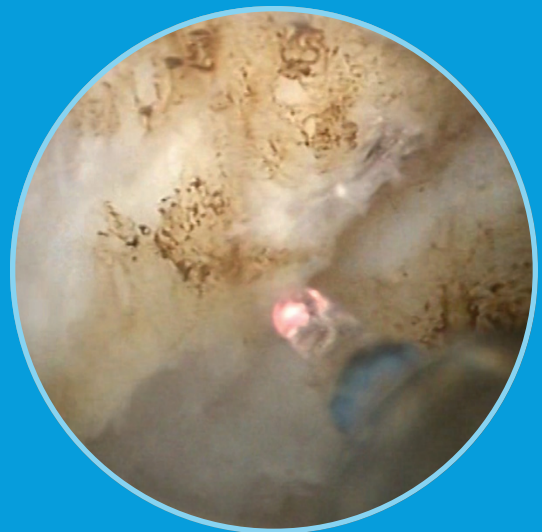
The market-leading Thulium Laser,
30 years in the making.



RevoLix Thulium Laser consistently delivers less than **0.5 mm optical penetration** underneath the visual cut

Effective hemostasis^{1,2} is established with **shallow coagulation** and clear visualization of surgical field: AUA recommended for patients with higher risk of bleeding.³

RevoLix Thulium enables **precise dissection**, without compromising surrounding tissues with excess heat: no deep necrosis



The *RevoLix* Thulium Laser offers numerous clinical advantages leading to improved patient outcomes and economic value.

Improved Safety	Reduce Adverse Events	Lasting Outcomes	Clinically Proven	Flexible Cost
Using thulium laser in BPH procedures is proven to reduce catheterization, blood transfusions and shorten hospital stays compared to TURP. ⁴	Clinical evidence supports the use of Thulium laser in BPH showing low perioperative morbidity⁵ and incidence of complication.⁶	AUA guidelines support the use of Thulium laser for the treatment of LUTS attributed to BPH ⁷ and its ability to maintain long term clinical efficacy.⁶	<i>RevoLix</i> Laser has a long and successful outcome track record proven by more than 150 clinical publications.	LISA Laser provides ultimate flexibility in value, offering both single-use and reusable fibers. KTP laser offers only single-use fibers, driving higher usage cost.

LISA Laser offers a wide portfolio of disposable and reusable fibers **optimized to effectively treat BPH** via tissue vaporization (ThuVAP), vaporesection (ThuVAP), enucleation (ThuLEP), and vapoenucleation (ThuVEP).



SKU	Product Name	Description	Optical Core/micron
Disposable Fibers			
101 503 289	RigiFib-SU	Bare Fiber	550 µm
101 503 385	RigiFib-SU 800	Bare Fiber	800 µm
101 503 386	RigiFib-SU 1000	Bare Fiber	940 µm
101 503 138	SideFib-SU	Side Fiber 70°	550 µm
Reusable Fibers			
101 503 213	RigiFib	Bare Fiber	550 µm
101 503 287	RigiFib 800	Bare Fiber	800 µm
101 503 284	RigiFib1000	Bare Fiber	940 µm
Capital Equipment			
105 108 331	<i>RevoLix</i>	200 Watt Thulium Laser	
105 204 111	<i>RevoLix jr.</i>	30 Watt Thulium Laser	
105 303 321	<i>RevoLix DUO</i>	150/20 Watt Thulium/Holmium Laser	

References

1. Macchione, L et al. Efficacy and safety of prostate vaporesection using a 120-W 2-µm continuous-wave Tm: YAG laser (*RevoLix 2*) in patients on continuous oral anticoagulant or antiplatelet therapy. *International urology and nephrology*, 45(6), 1545-1551.
2. Vargas, C et al. Vaporization of the prostate with 150-W thulium laser: complications with 6-month follow-up. *Journal of endourology*, 28(7), 841-845.
3. <http://aunet.mediaroom.com/2018-05-17-AUA-Releases-New-Clinical-Guideline-for-Surgical-Management-of-Lower-Urinary-Tract-Symptoms-Attributed-to-Benign-Prostatic-Hyperplasia>
4. DeCao Hong et al. Comparison between thulium laser resection of prostate and transurethral plasmakinetic resection of prostate or transurethral resection of prostate. *Sci Rep*. 2015;5:14542. Published 2015 Oct 7.
5. Gross, Andreas J. et al. Complications and Early Postoperative Outcome in 1080 Patients After Thulium Vapoenucleation of the Prostate: Results at a Single Institution. *European Urology*, Volume 63, Issue 5, 859 - 867
6. Si, Jiemin et al. The *RevoLix*™ 2µm Continuous Wave Laser Vaporesection for the Treatment of Benign Prostatic Hyperplasia: Five-Year Follow-Up. *Photomedicine and Laser Surgery* Vol. 34, No. 7
7. American Urological Association. Benign Prostatic Hyperplasia: Surgical Management of Benign Prostatic Hyperplasia/Lower Urinary Tract Symptoms (2018, amended 2019) Guideline Statement 20

LISA Laser Products GmbH is a wholly owned subsidiary of OmniGuide Holdings.
For more information call 888-666-4484 or visit www.omni-guide.com

LISA Laser Products and *RevoLix* are registered trademarks of LISA Laser Products GmbH. All content is copyright of LISA Laser Products GmbH. © 2019 See www.omni-guide.com/patents for information about the coverage of LISA Laser Products by U.S. and/or foreign patent rights. 1-0168-084-00-00 rev. 0. To request copies use: [MKT-025](#)

888.666.4484 | 617.551.8444
customerservice@omni-guide.com
www.omni-guide.com

